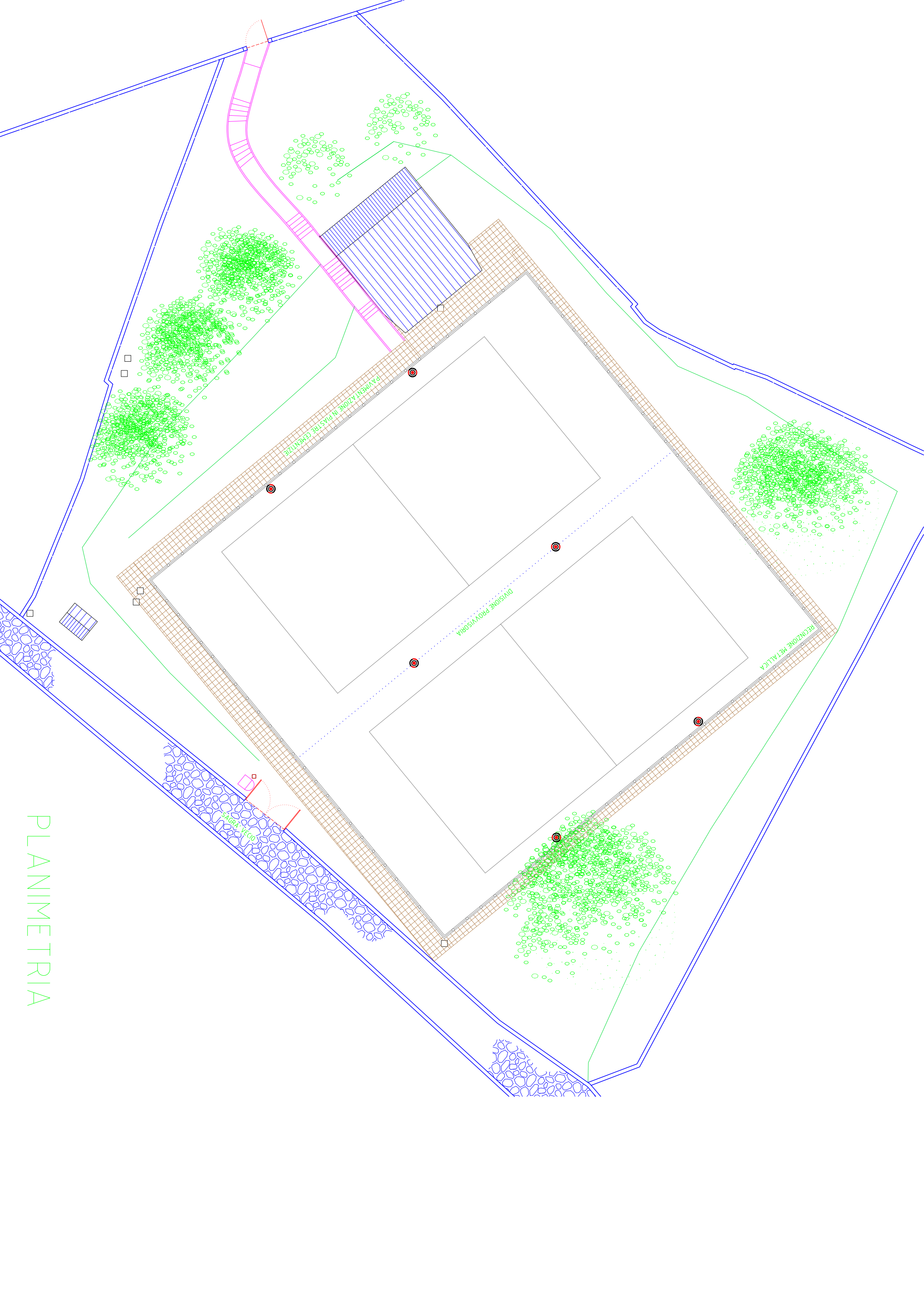
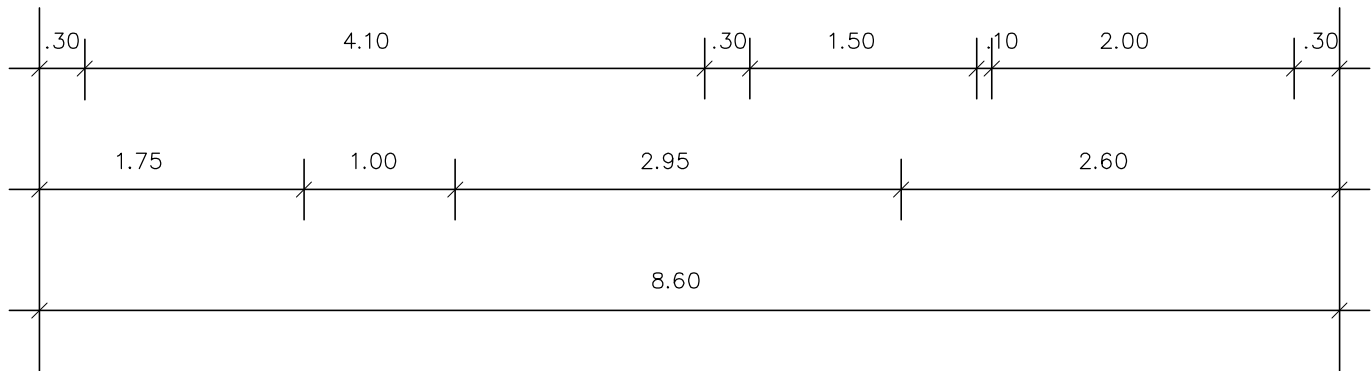
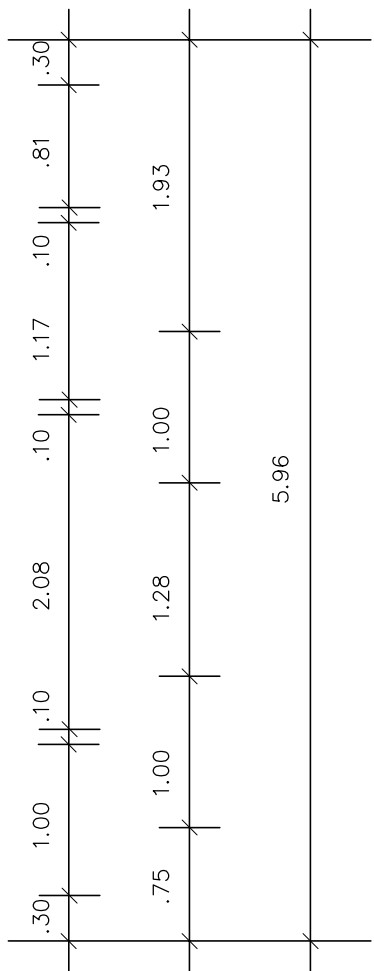
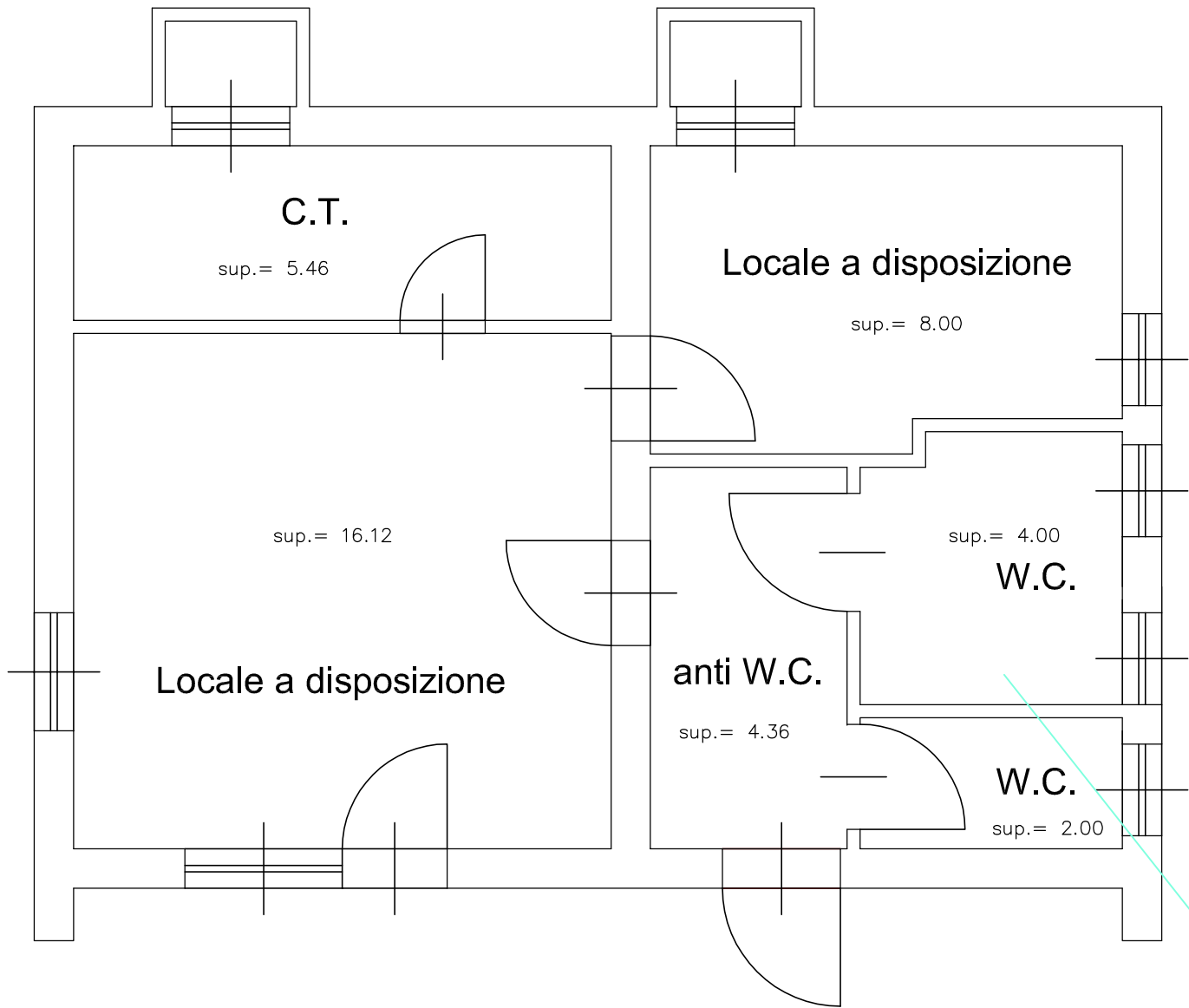
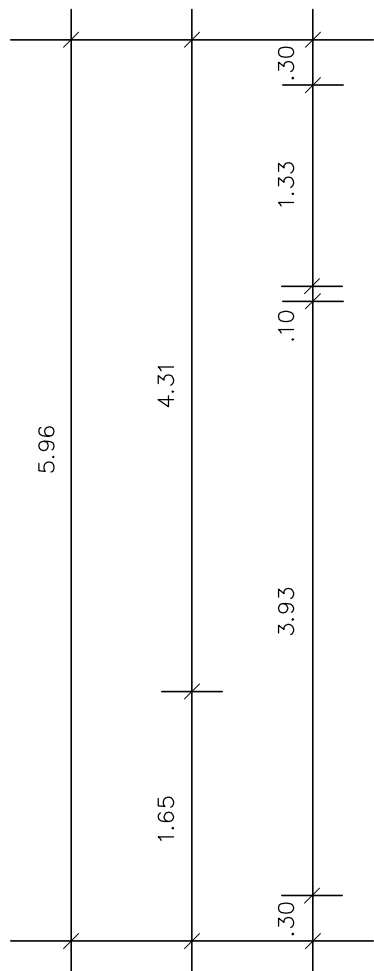
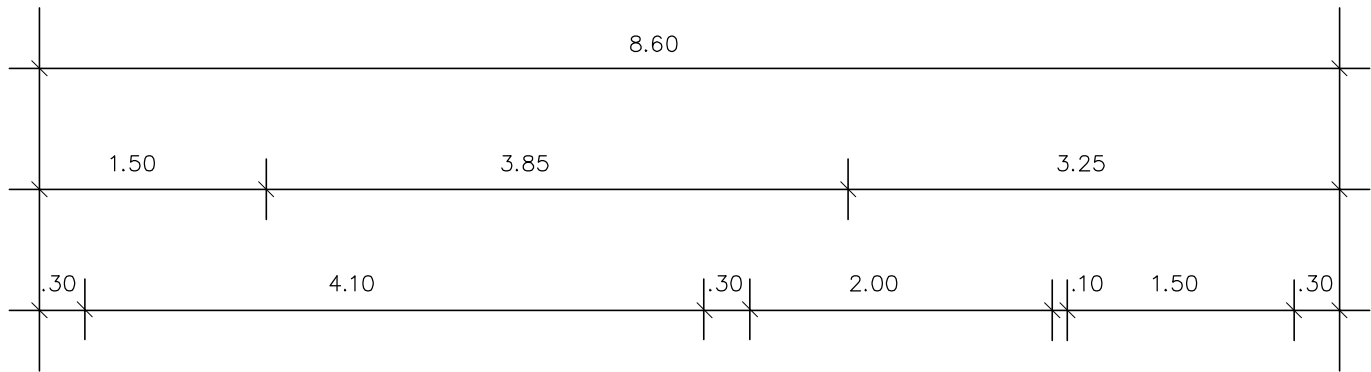


Architectural site plan of a church complex. The plan shows a central rectangular area with a grid pattern, surrounded by a blue boundary. Key features include:

- PAVIMENTAZIONE IN PIASTRE CEMENTIZIE**: A label indicating the paving material in the central area.
- DIVISIONE PROVVISORIA**: A label indicating a temporary division line.
- RECINZIONE METALLICA**: A label indicating a metal fence along the right side.
- SAGRA VECIO**: A label indicating an old sacra area at the bottom left.
- Area with green circles**: Several clusters of green circles representing vegetation or trees.
- Area with blue hatching**: A rectangular area with blue hatching, possibly representing a building or a specific material.
- Area with blue grid**: A rectangular area with a blue grid pattern, possibly representing a paved area or a specific material.
- Area with blue wavy lines**: A rectangular area with blue wavy lines, possibly representing a body of water or a specific material.
- Area with blue diagonal lines**: A rectangular area with blue diagonal lines, possibly representing a building or a specific material.
- Area with blue dots**: A rectangular area with blue dots, possibly representing a specific material or a specific feature.
- Area with blue squares**: A rectangular area with blue squares, possibly representing a specific material or a specific feature.
- Area with blue circles**: A rectangular area with blue circles, possibly representing a specific material or a specific feature.
- Area with blue triangles**: A rectangular area with blue triangles, possibly representing a specific material or a specific feature.
- Area with blue diamonds**: A rectangular area with blue diamonds, possibly representing a specific material or a specific feature.
- Area with blue stars**: A rectangular area with blue stars, possibly representing a specific material or a specific feature.
- Area with blue crosses**: A rectangular area with blue crosses, possibly representing a specific material or a specific feature.
- Area with blue pluses**: A rectangular area with blue pluses, possibly representing a specific material or a specific feature.
- Area with blue asterisks**: A rectangular area with blue asterisks, possibly representing a specific material or a specific feature.
- Area with blue hash marks**: A rectangular area with blue hash marks, possibly representing a specific material or a specific feature.
- Area with blue percent signs**: A rectangular area with blue percent signs, possibly representing a specific material or a specific feature.
- Area with blue ampersands**: A rectangular area with blue ampersands, possibly representing a specific material or a specific feature.
- Area with blue at signs**: A rectangular area with blue at signs, possibly representing a specific material or a specific feature.
- Area with blue dollar signs**: A rectangular area with blue dollar signs, possibly representing a specific material or a specific feature.
- Area with blue pound signs**: A rectangular area with blue pound signs, possibly representing a specific material or a specific feature.
- Area with blue yen signs**: A rectangular area with blue yen signs, possibly representing a specific material or a specific feature.
- Area with blue euro signs**: A rectangular area with blue euro signs, possibly representing a specific material or a specific feature.
- Area with blue dollar signs**: A rectangular area with blue dollar signs, possibly representing a specific material or a specific feature.
- Area with blue pound signs**: A rectangular area with blue pound signs, possibly representing a specific material or a specific feature.
- Area with blue yen signs**: A rectangular area with blue yen signs, possibly representing a specific material or a specific feature.
- Area with blue euro signs**: A rectangular area with blue euro signs, possibly representing a specific material or a specific feature.



PIANTA PIANO TERRA stato di progetto



a

a

elettroventilazione forzata  
min 15 ric/ora



All. 2 – Foto stato luoghi

